



**H O M E**  
**TRENDS & DESIGN**

FURNITURE FOR GOOD

# **COSMETIC STANDARDS**

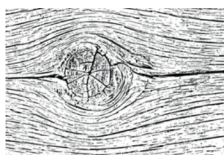
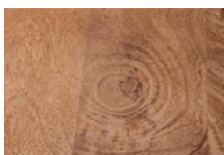


## COSMETIC STANDARDS - WOOD

---

Subtle differences in color, grain, as well as the presence of cracks and knots, are distinctive attributes that highlight the individual character of the wood, contributing to the distinct qualities of each piece. These slight variations are highly sought-after, enhancing the genuine beauty of the wood.

**It's crucial to acknowledge that these features are unique to each item and should not be regarded as defects.**



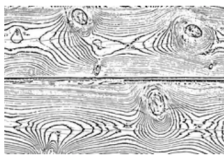
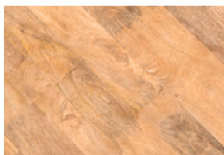
### KNOTS

Knots represent natural imperfections in the wood, forming where tree branches were enclosed within the trunk. **Given that HTD furniture is crafted from the entire tree, knots of diverse sizes and shapes will naturally be part of the design.** In some cases, small cracks may appear within the knots. It's important to note that these minor cracks do not compromise the structural integrity of the furniture and are not deemed defects.



### FILLER

Given that HTD utilizes the entire tree in crafting its furniture, **certain knots and wind cracks may require the application of filler.** HTD exclusively employs high-quality epoxy-based filler renowned for its durability, ensuring its longevity matches that of the furniture. While efforts are made to closely match the coloration, the presence of filler, if noticeable, is not considered a defect. This strategic use of filler aligns with our commitment to eco-friendliness by minimizing wood waste during the crafting process.

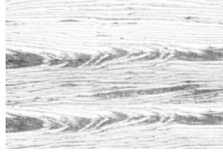
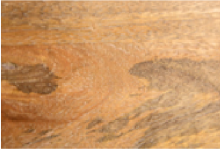


### GRAIN VARIATIONS

HTD's solid hardwood furniture utilizes tropical hardwood with pronounced grain and color variations. **These differences contribute significantly to the product's beauty, turning each piece into a unique work of art.** Therefore, these variations are inherent, unavoidable, and not regarded as defects.

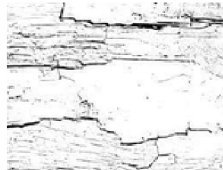
## COSMETIC STANDARDS - WOOD

---



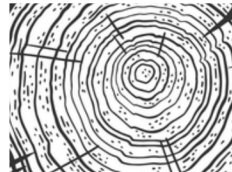
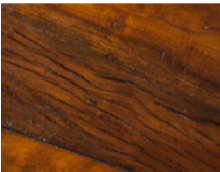
### MINERAL DEPOSITS

The natural minerals like iron, phosphate, calcium, etc., present in the soil where the tree grew can result in variations in wood grain. These variations may manifest as rings, circles, lines, or shades darker or lighter than the regular wood grain. **These characteristics are intrinsic, unavoidable, and not classified as defects.**



### NATURAL CRACKS

Seasonal cracks and splits, while normal in solid tropical hardwood furniture, may occasionally emerge. **Often, these natural cracks result from environmental changes like humidity and sunlight. They are a natural aspect of the wood, influenced by the tree's movement due to wind and natural forces.** If the crack is within reasonable limits, it won't impact the furniture's structural integrity and is not deemed a defect.



### CHECKING

**Checks, which are hairline cracks in the wood resulting from natural tree movement due to wind and environmental elements, are inherent in the tropical hardwoods used by HTD.** Fluctuations in climate, environmental conditions, and factors like air conditioning, heaters, and sunlight may cause these cracks to open and close over time. **This occurrence is unavoidable and not considered a defect.** In some cases, minor touch-ups with a stain marker may be necessary.

## COSMETIC STANDARDS - IRON

---

Recycled cast iron possesses both durability and a captivating industrial antique style. Its inherent rigidity is achieved through hand pouring into casting pans, resulting in a natural and distinctive beauty. The cast iron is recycled in our foundry, utilizing scrap iron, steel, limestone, and carbon, while employing traditional sand casting methods. **It's crucial to acknowledge that these features are unique to each item and should not be regarded as defects.**



### LIGHT RUST

Surface oxidation of iron, typically appearing as a reddish-brown discoloration. It can occur when iron is exposed to moisture and air.



### OXIDATION

The process of iron reacting with oxygen in the presence of moisture, resulting in the formation of iron oxide, or rust on the surface.



### MECHANICAL

Pertaining to issues or imperfections arising from mechanical processes, such as machining or shaping, that can affect the iron's surface.



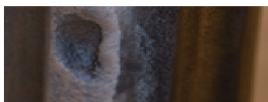
### PITS FROM CASTING

Irregular depressions or voids on the iron surface that originate from the casting process. **These can be a natural outcome of the cooling and solidification of molten iron.**



### GREASE

Presence of grease or oily substances on the iron, which may be applied for various purposes such as lubrication or protection. **Grease can impact the appearance and feel of the iron surface.**



### DENTS

Physical depressions or indentations on the iron surface caused by external force or impact.

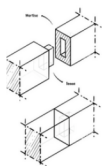
# CONSTRUCTION DETAILS



## CONSTRUCTION DETAILS - WOOD

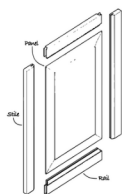
---

Our furniture exhibits superior craftsmanship through time-honored traditional construction details. Mortise and Tenon Joinery ensures robustness, while Floating Panels and Tops allow wood to adapt, enhancing longevity. Hand-Turned Components and Legs add a unique touch, and Dovetailed Drawers ensure lasting durability. Dutchman Patches and Butterfly Joints serve both structural and decorative purposes, showcasing a commitment to quality and artistry in every piece. See below for detailed description of techniques used in our furniture.



### MORTISE & TENON JOINERY

Mortise and tenon joinery, is one of the oldest furniture construction techniques dating back hundreds of years. This construction method predates the use of glues and other construction methods. This method is characterized by interlocking wood, provides exceptional structural integrity, making it the primary construction technique utilized by HTD in much of its furniture.

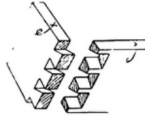


### FLOATING PANELS & TOPS

Crafting furniture from solid hardwood requires meticulous technical precision and expert craftsmanship. To maintain the structural integrity by accommodating the natural expansion and contraction of solid wood components, a crucial construction method involves the use of metal clips to secure tabletops and panels. These clips, equipped with slots, allow the wood to move organically. Within the frame, meticulously assembled through mortise and tenons, wood panels are introduced using a tongue and groove technique. This deliberate design facilitates the inherent movement of solid wood, a crucial consideration in crafting heirloom furniture to allow panels to breathe freely. The panel essentially "floats" within the frame without the need for glue or nails, effectively preventing potential cracking.

## CONSTRUCTION DETAILS - WOOD

---



### DOVETAIL DRAWERS

Crafting furniture from solid hardwoods demands precision in technical accuracy and craftsmanship. Dovetail drawers refer to a construction technique in woodworking where interlocking joints, resembling the shape of a dove's tail, are used to connect the sides of the drawer to the front. This method creates a strong and durable connection, often found in high-quality furniture and cabinetry.



### DUTCHMAN PATCHES & BUTTERFLY JOINTS

In reclaimed wood, it's common to patch sections that were previously used in old structures or furniture. Care is taken to closely match grains and coloration. Although these patches may be noticeable, they showcase the exceptional craftsmanship required when working with reclaimed materials. Solid wood often incorporates butterfly joints to reinforce panels and components with cracks. These elements not only enhance the heirloom quality but also contribute to the beauty and uniqueness of each piece.



### HAND-TURNED COMPONENTS & LEGS

Hand-turned components and legs are integral to the aesthetic appeal and structural strength of HTD's solid wood furniture, showcasing its handmade craftsmanship. Unlike machine-turned processes, each component is individually hand-carved on the turning machine. Additionally, they are meticulously hand-sanded before being removed from the lathe, as illustrated in the accompanying picture. This meticulous, manual approach contributes to the exceptional beauty of the turned components.

## CONSTRUCTION DETAILS - ADVANTAGES & BENEFITS

---

### SOLID HARDWOOD

#### Advantages & Benefits

Our products are crafted with selected materials and timeless construction techniques, ensuring lasting beauty and durability. Solid wood, preferred for its desirability and minimal chemical use, offers a healthier choice for homes compared to veneer.

### MORTISE & TENON JOINTS

#### Advantages & Benefits

A traditional technique that joins wood plank tops, that enhance the furniture's durability.

### FLOATING PANELS & TOPS

#### Advantages & Benefits

Enables wood to adjust to climate, temperature, and humidity changes, and removes the need for nails and screws that might not withstand these variables.

### DOVETAILED DRAWERS

#### Advantages & Benefits

A time-honored construction method, preventing the product from deteriorating and ensures decades of reliable service, even under heavy daily use.

### BUTTERFLY JOINTS & DUTCHMAN PATCHES

#### Advantages & Benefits

Shaped like butterflies or bowties, are woodworking elements joining two wood pieces, providing structural integrity and decoration while preventing crack spreading. These accents enhance aesthetic appeal and contribute to the furniture's overall durability.

### HAND-PLANED & DISTRESSED SURFACES

#### Advantages & Benefits

The family-friendly distressed finish ensures worry-free use, protecting the investment by reducing concerns about everyday wear and tear.

### ANTIQUED HARDWARE

#### Advantages & Benefits

Aged or vintage-style hardware is proven durable, and adds a timeless aesthetic.

### KILN-DRIED WOOD

#### Advantages & Benefits

Prevents wood from cracking, warping and keeping splitting minimal.

### LOW VOC CATALYZED FINISHING PROCESS

#### Advantages & Benefits

The inherent beauty of tropical hardwood is preserved for decades, promoting eco-friendliness with no harmful off-gassing, ensuring the safety of both the environment and families. The layers of sealer, stain, patina, and lacquer offer remarkable durability. Maintenance is hassle-free, requiring only a damp cloth for cleaning.

### MOISTURE RESISTANT FINISH

#### Advantages & Benefits

Tables crafted from robust materials require minimal finishing, ensuring everyday enjoyment without the need for excessive caution. Resistant to water rings, they provide a reliable surface that won't easily be marked by moisture.



## CONSTRUCTION DETAILS - CATALYZED FINISH

---

### OUR HTD WOOD FINISHING PROCESS

#### Used on our Mango, Acacia, and Neem Woods

Our glues, finishes, stains, and sealers are exclusively eco-friendly, low-VOC, and/or water-based. This commitment ensures a high standard of strength, durability, color consistency, and moisture resistance. Not only do these products meet quality standards, but they also prioritize the safety of factory workers and are ideal for families in their homes.

### SEVEN STEP CATALYZED FINISH

---

This finish process protects the wood from the hazards of everyday use. The catalyzed process employed by HTD ensures long-lasting protection for your furniture, creating a strong bond between sealer and lacquer layers. However, caution is advised to prevent scratching, placing excessively hot items, or using acetone/nail polish remover, as these can harm the fine finish.

#### 1 Patina Layer Process

Following the meticulous hand-planing process that imparts a distinctive bench-made texture to the table, the craftsman applies a black patina layer. While it's subsequently sanded off, keen observers will notice remnants of these dark accents in the grooves, notches, and distressed areas around the piece.

#### 2 Sanding Patina

An essential step in the finishing process, the sanding of the patina is meticulously carried out entirely by hand. This method ensures that the perfect level of distressing and patina is retained, contributing to the authentic old-world feel of the collection.

#### 3-4 Application of Sealer Coats

Following the patina and sanding process, sealer coats are meticulously applied to enhance the durability and protective qualities of the piece.

#### 5-6 Lacquer Coats

The application of lacquer coats follows, creating a strong bond with the sealer. This results in a highly moisture-resistant finish, adding to the overall durability of the piece.

#### 7 Final Polishing and Touch-Up

The concluding steps involve a final polishing, ensuring a smooth and refined surface. Any necessary touch-ups are performed to achieve a flawless finish, showcasing the meticulous craftsmanship of the piece.

If damage does occur, authorized Mohawk repair specialists can easily remedy most finishes through a straightforward repair process.

*Reclaimed wood products typically lack a sealant. Special care is required to promptly wipe up spills, and in the event of a stain, correcting the finish may involve sanding the wood with fine sandpaper.*

## HTD TREE LIBRARY

---

### MANGO WOOD

#### 1 **Most Popular Fruit Tree Worldwide**

Mango Trees top the charts globally as the most popular fruit tree

#### 2 **Ideal for Solid Wood Furniture**

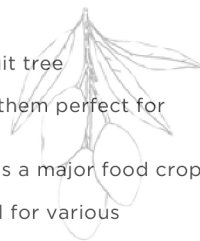
These fast-growing hardwoods boast dense grains, making them perfect for crafting durable and high-quality solid wood furniture

#### 3 **Sustainability and Regular Replanting**

Harvested and regularly replanted due to their crucial role as a major food crop

#### 4 **Wood Quality**

Comparable in quality to cherry or ash, enhancing its appeal for various applications



### ACACIA WOOD

#### 1 **Diversity in Species**

Over 2,000 species make Acacia the most common tree globally

#### 2 **Sustainable Harvesting**

Harvested in accordance with government and forestry standards, ensuring responsible and eco-friendly practices

#### 3 **Dense and Durable**

Exhibits exceptional density and quality, making it a long-lasting choice that can endure for generations

#### 4 **Rapid Maturity**

Reaches maturity in just 5 years, contributing to its appeal for sustainable and efficient wood sourcing

#### 5 **Wood Quality**

Comparable to mesquite wood, emphasizing its desirable characteristics and versatility



### RECLAIMED NEEM & SAAL

#### 1 **Durable and Moisture-Resistant**

Exhibits durability, moisture resistance, and natural insect-repelling qualities, ensuring longevity and resilience

#### 2 **Historical Origin**

Reclaimed from palaces and forts, sourced as interior support beams, carrying a historical and authentic character

#### 3 **Cultural Significance**

Primarily used as a building material in India, reflecting its cultural importance and traditional applications



### RECLAIMED TEAK

#### 1 **Prized Characteristics**

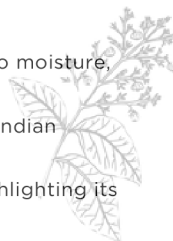
Valued for its exceptional beauty, durability, and resistance to moisture, making it a sought-after material

#### 2 **Rich Heritage**

Boasting a legacy of over 5000 years, a known staple in the Indian subcontinent for constructing buildings, furniture, and boats

#### 3 **Sustainable Reclamation**

Continuously reclaimed and re-purposed for generations, highlighting its sustainability and timeless appeal





**H O M E**  
**TRENDS & DESIGN**  

---

**FURNITURE FOR GOOD**

**CONTACT US**

**P** 512-804-5450   **F** 512-491-6882   **E** [INFO@HTDDIRECT.COM](mailto:INFO@HTDDIRECT.COM)